

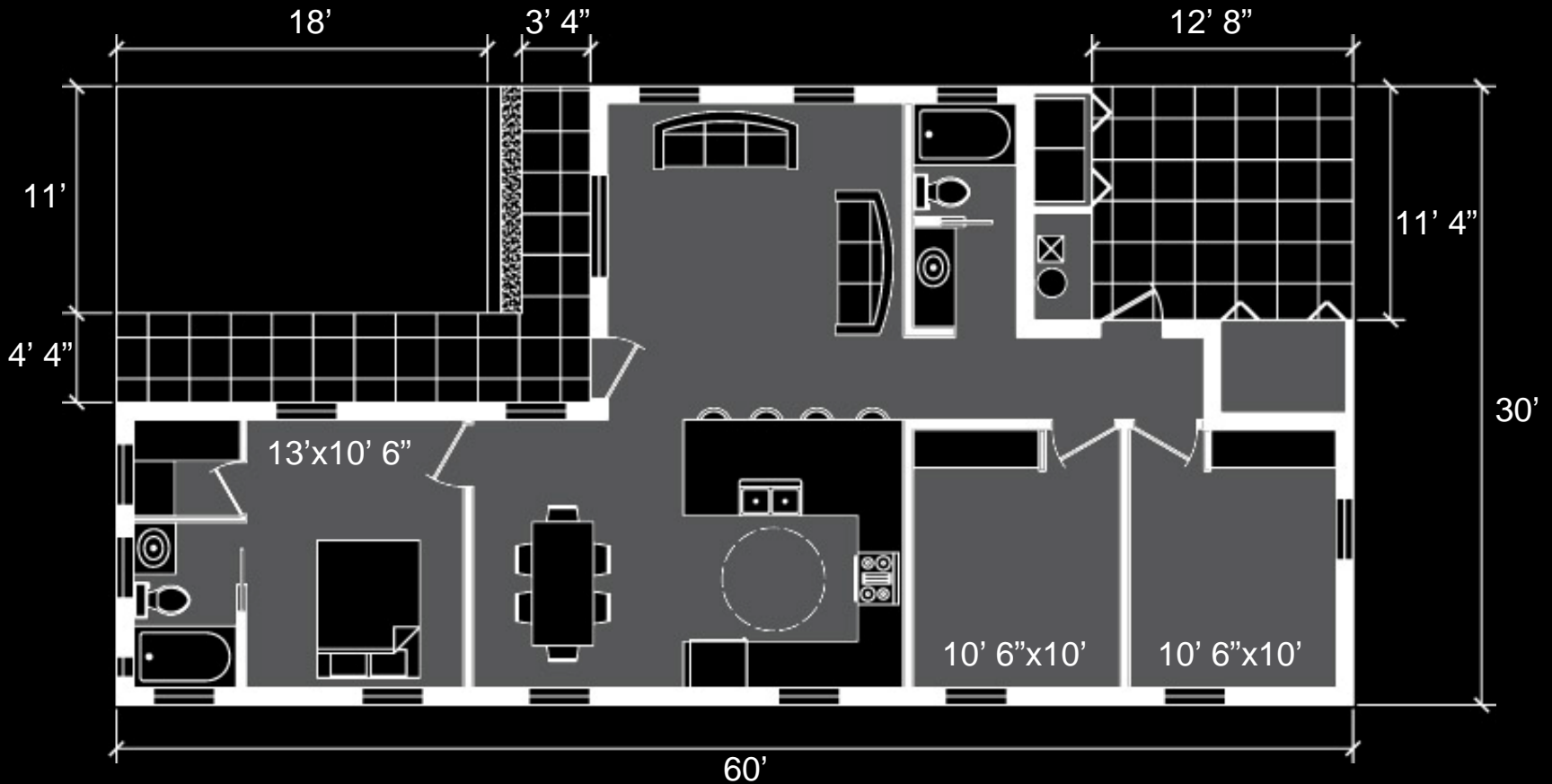
Bullhead City, Arizona 2007

*East-West Oriented Lot, 40'x80'*



# Bullhead City, Arizona 2007 – House Floor Plan

*East-West Oriented Lot, 40'x80'*



1095 sqft

3 bedrooms

2 bathrooms

Storage room

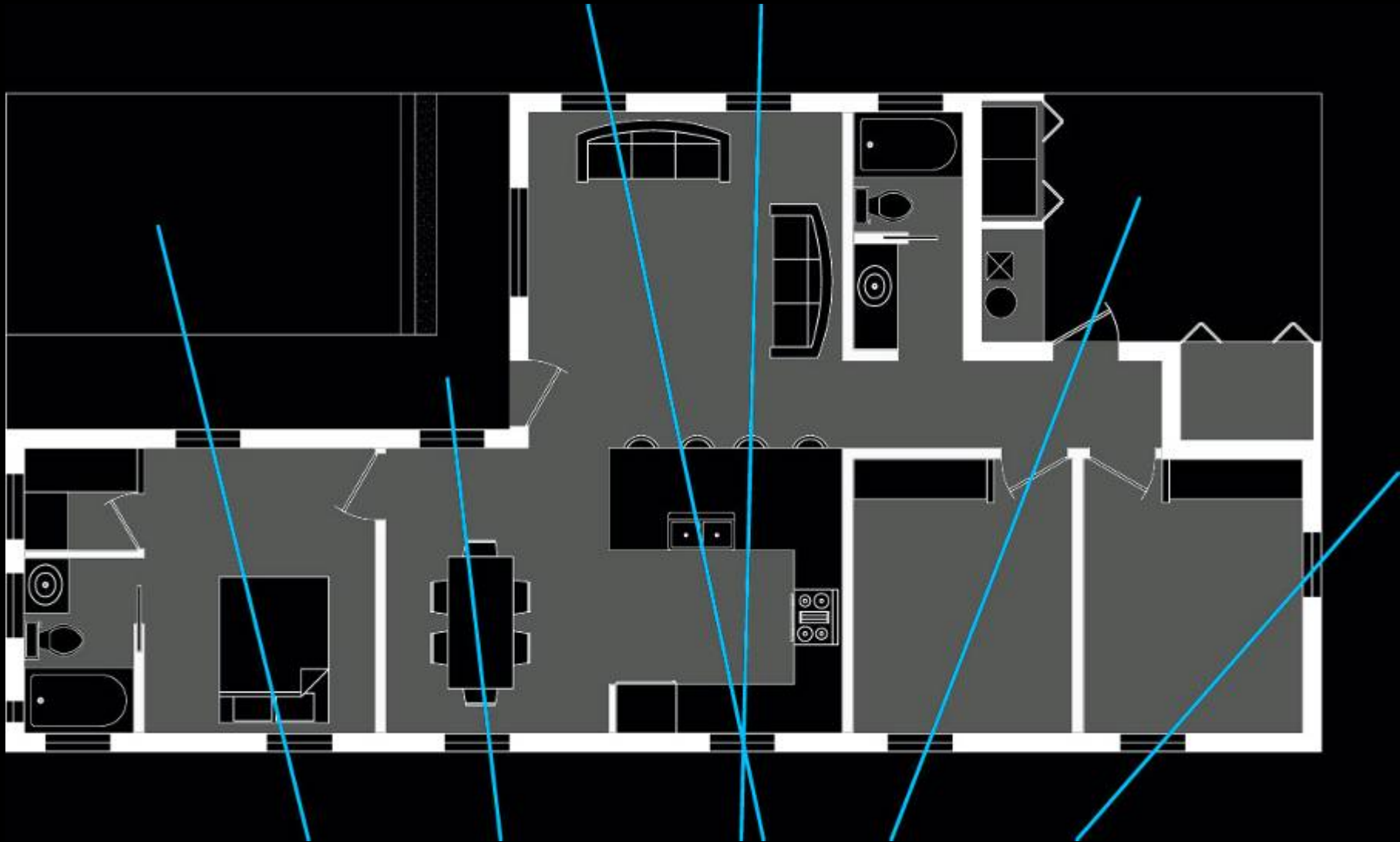
Breakfast bar

Carport

Flower garden

# Bullhead City, Arizona 2007 – Natural Ventilation Diagram

*East-West Oriented Lot, 40'x80'*



**Bullhead City, Arizona 2007 – Passive Solar Heating Diagram**  
*East-West Oriented Lot, 40'x80'*



**Bullhead City, Arizona 2007 – Water Harvesting Diagram**  
*East-West Oriented Lot, 40'x80'*



# Bullhead City, Arizona 2007 – House Elevations

*East-West Oriented Lot, 40'x80'*



**Bullhead City, Arizona 2007**

*East-West Oriented Lot, 50'x100'*



# Bullhead City, Arizona 2007 – Expanding the Floor Plan

*East-West Oriented Lots*



Expanded plan

Added-

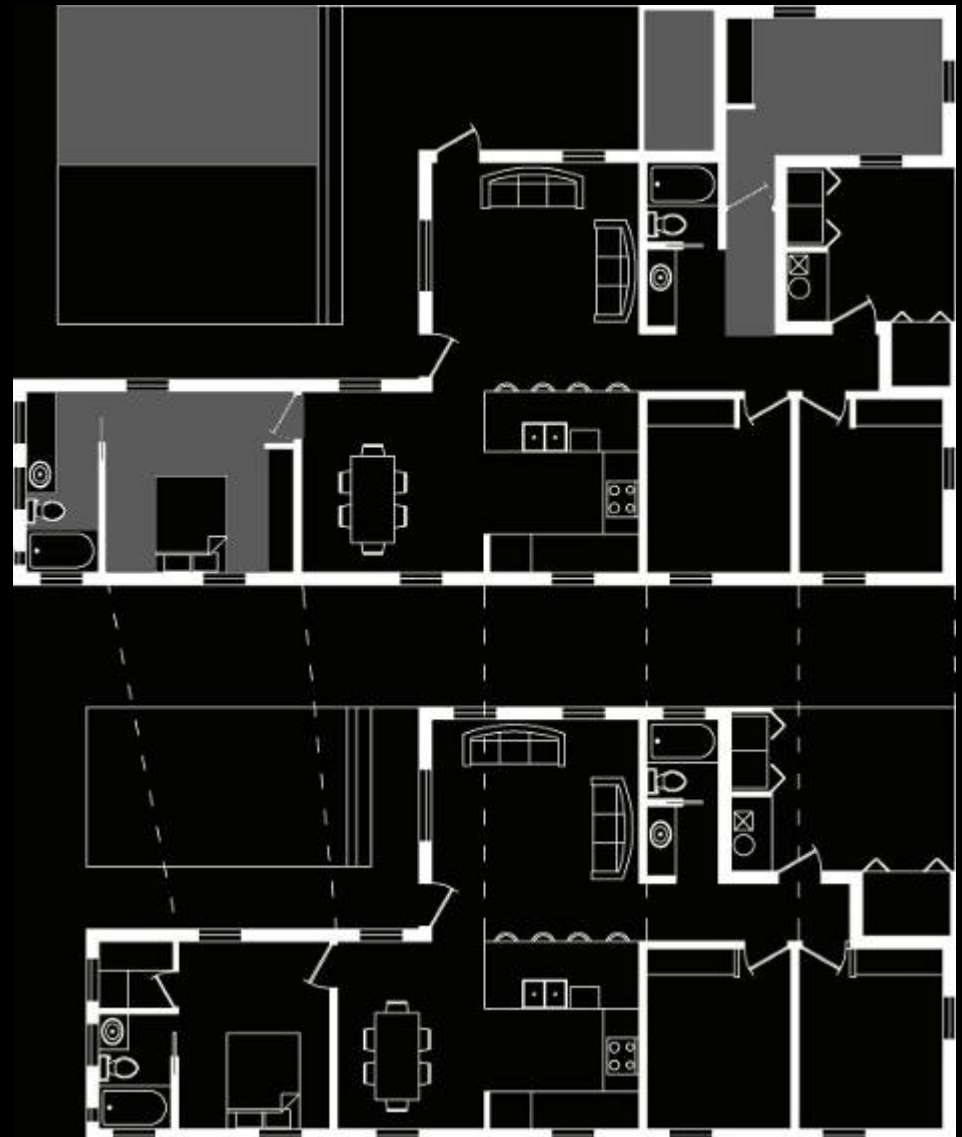
hallway

4<sup>th</sup> bedroom

2<sup>nd</sup> carport space

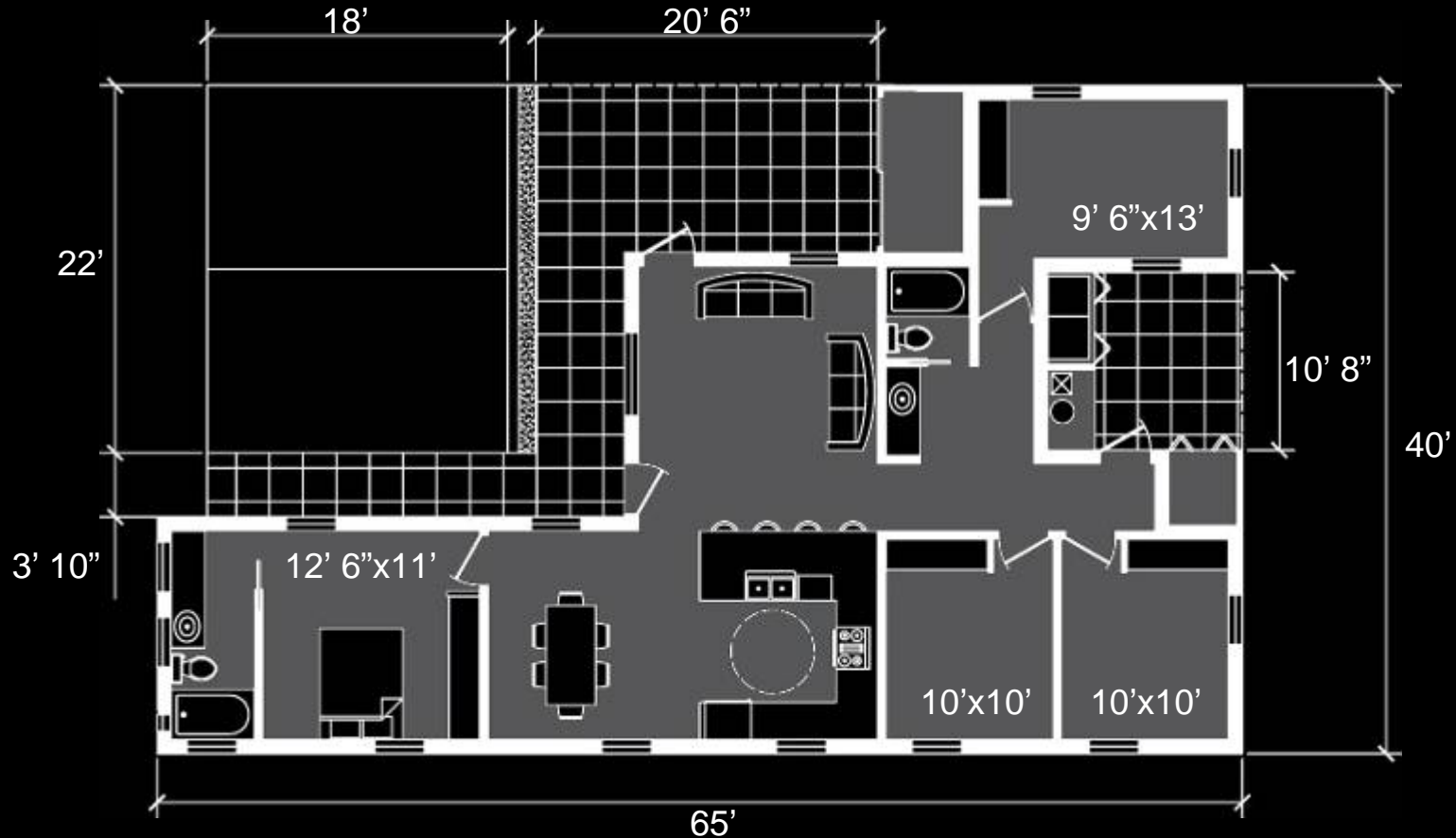
2<sup>nd</sup> storage space

Reconfigured master  
bedroom



# Bullhead City, Arizona 2007 – House Floor Plan

*East-West Oriented Lot, 50'x100'*



1337 sqft

4 bedrooms

2 bathrooms

2nd storage room

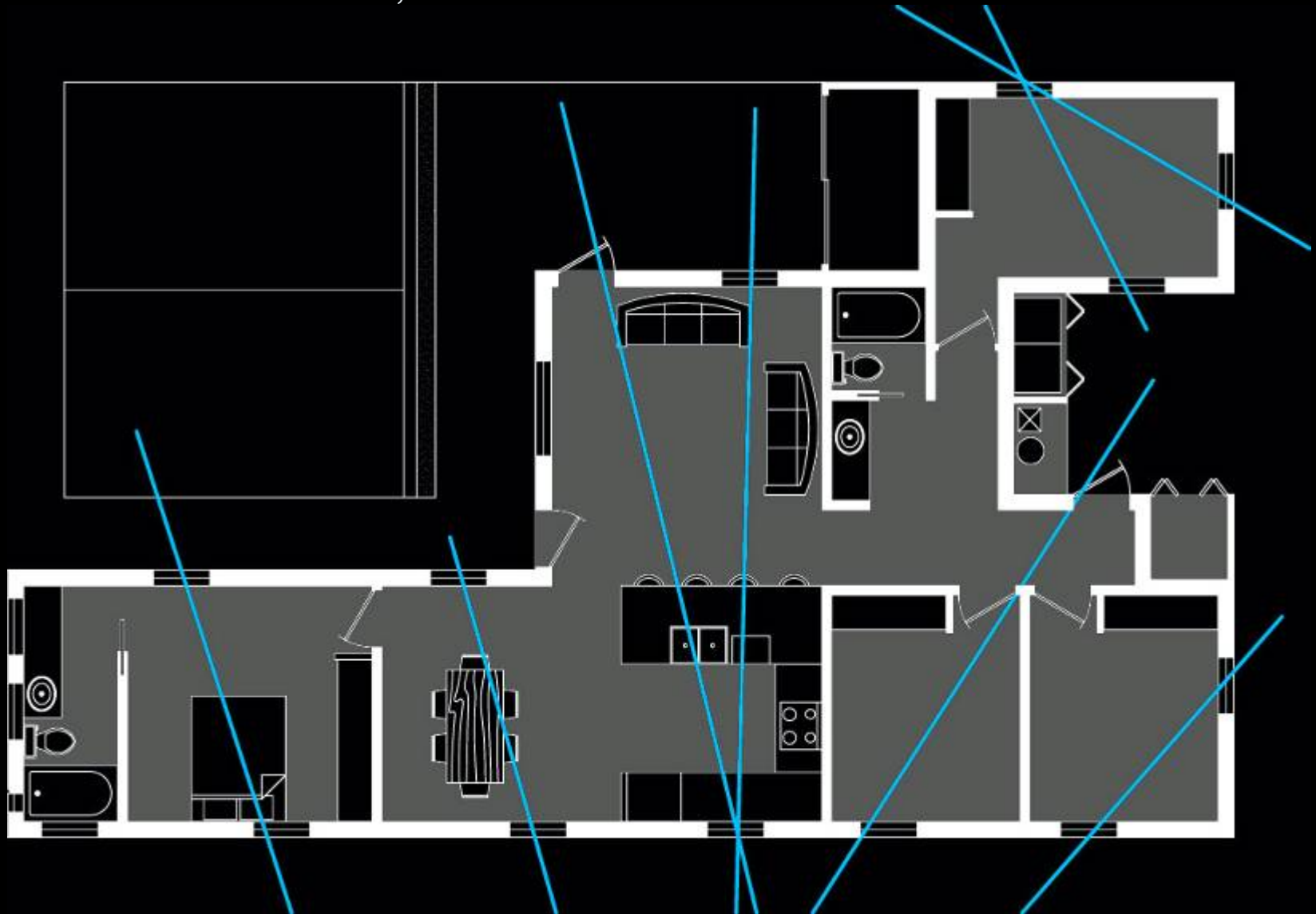
2 car carport spaces

Breakfast bar

Flower garden

# Bullhead City, Arizona 2007 – Natural Ventilation Diagram

*East-West Oriented Lot, 50'x100'*

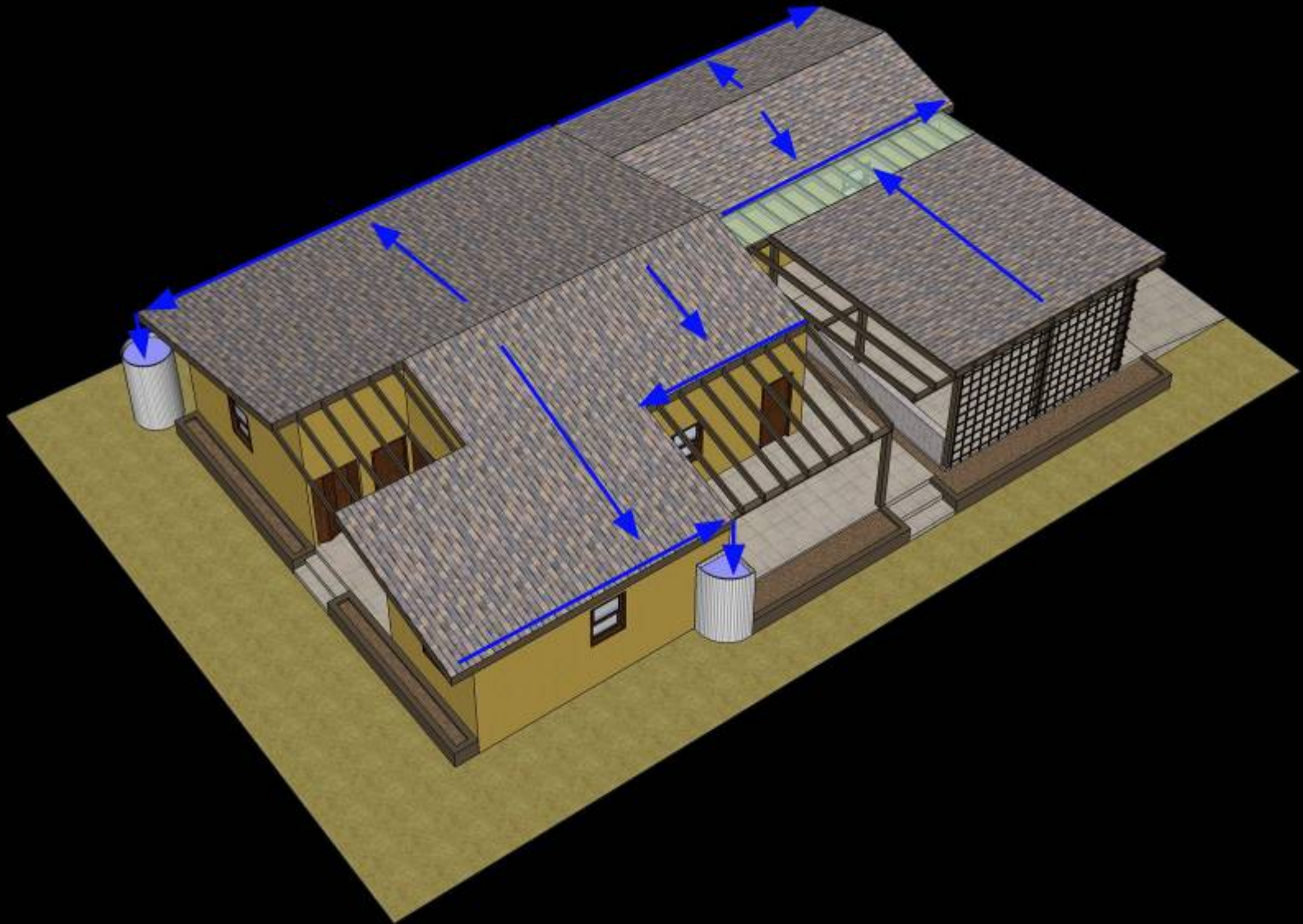


# Bullhead City, Arizona 2007 – Passive Solar Heating Diagram

*East-West Oriented Lot, 50'x100'*



**Bullhead City, Arizona 2007 – Water Harvesting Diagram**  
*East-West Oriented Lot, 50'x100'*



# Bullhead City, Arizona 2007 – House Elevations

*East-West Oriented Lot, 50'x100'*



Bullhead City, Arizona 2007

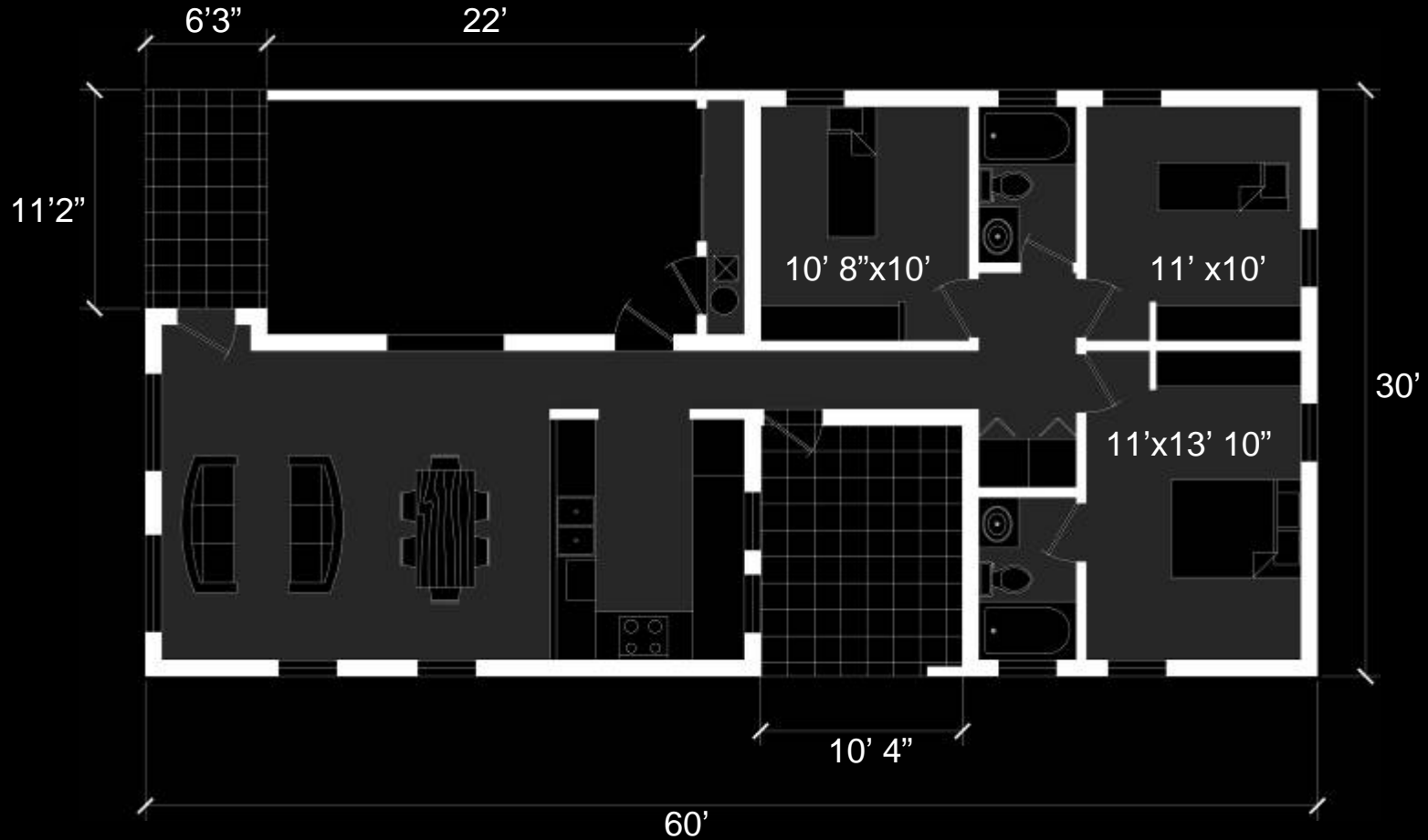
*North-South Oriented Lot, 40'x80'*



# Bullhead City, Arizona 2007 – House Floor Plan



*North-South Oriented Lot, 40'x80'*



1121 sqft

3 bedrooms

2 bathrooms

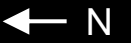
Storage room

Carport

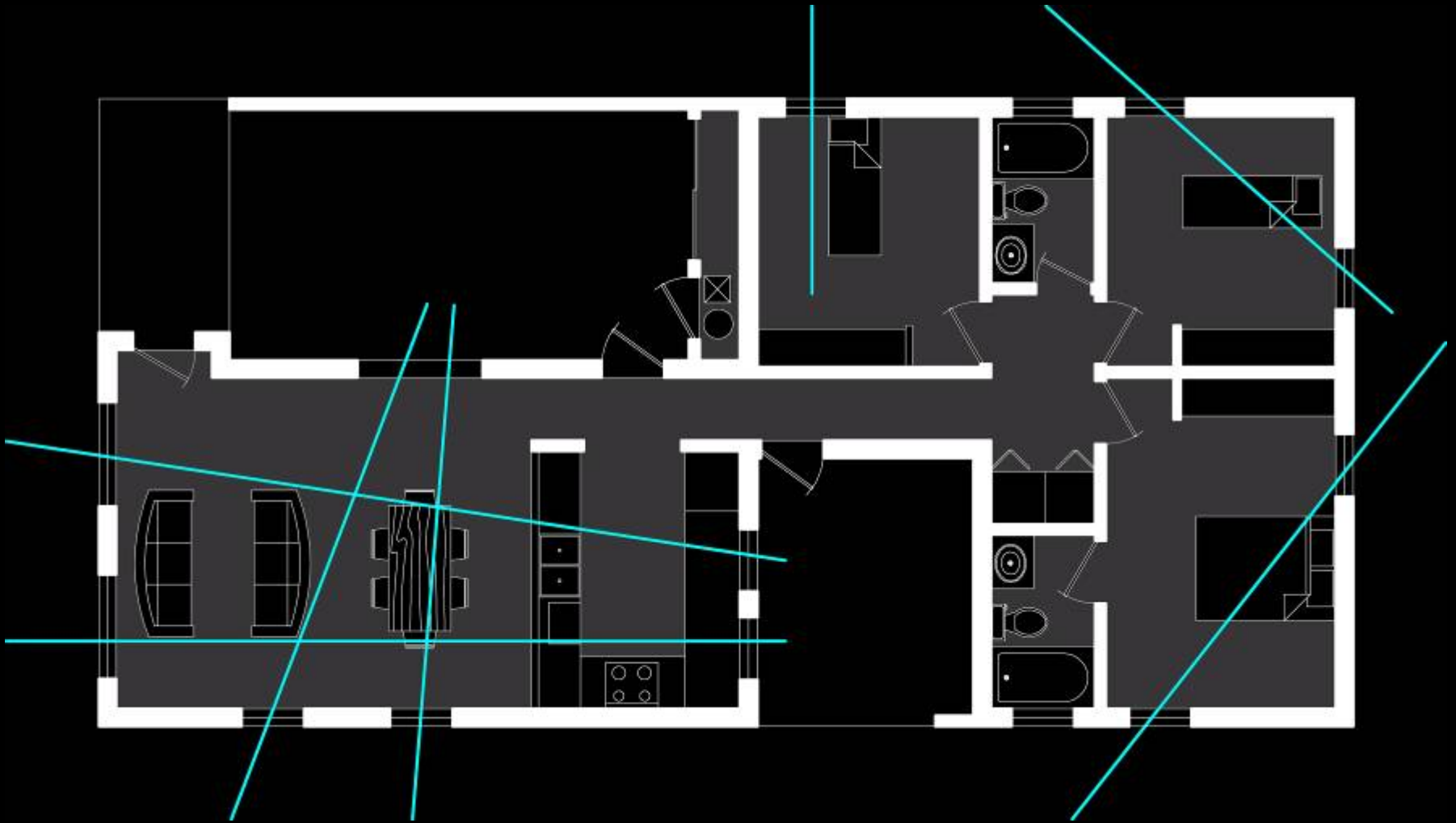
Kitchen pass through

Courtyard

**Bullhead City, Arizona 2007 – Natural Ventilation Diagram**



*North-South Oriented Lot, 40'x80'*

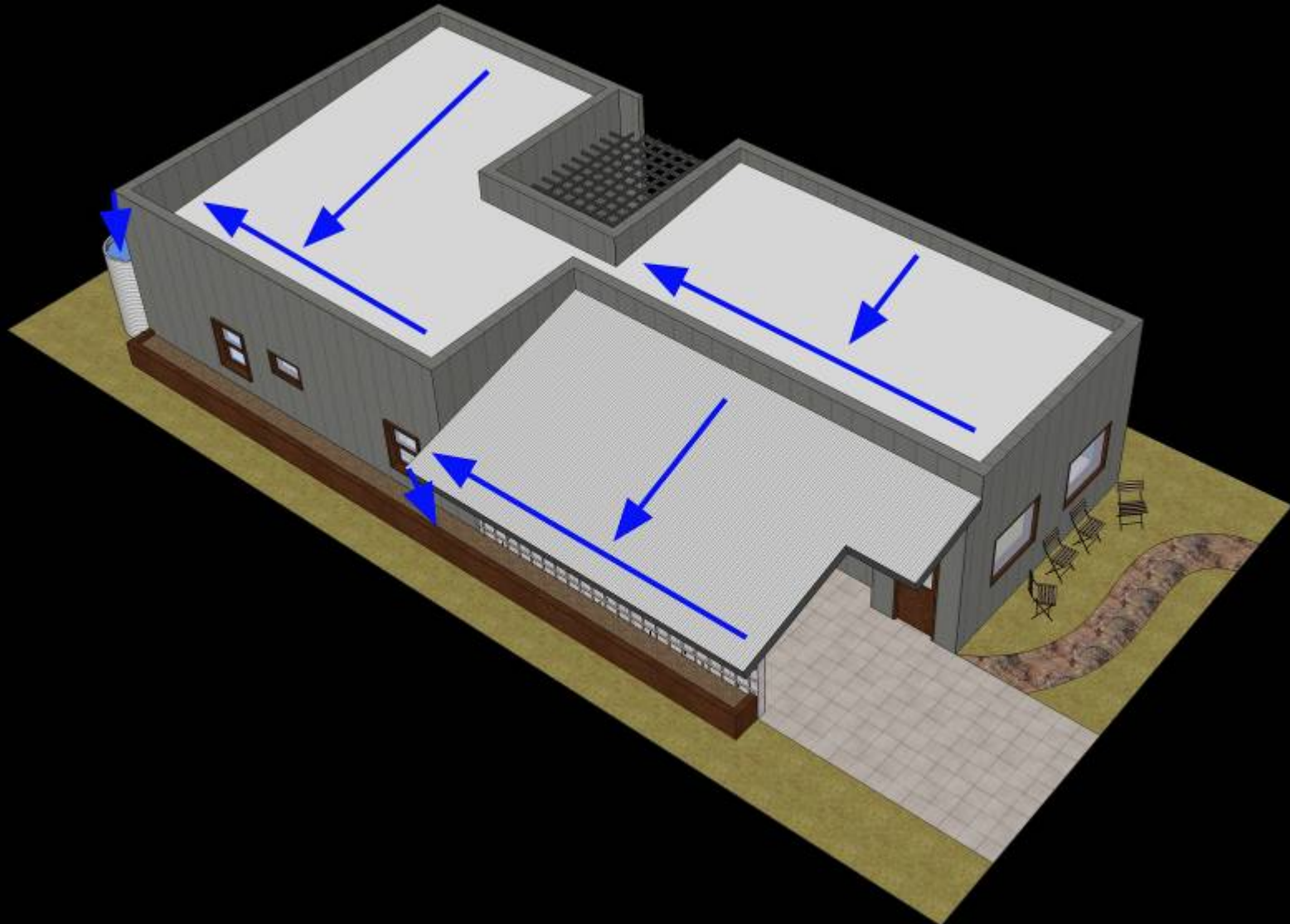


**Bullhead City, Arizona 2007 – Passive Solar Heating Diagram**  
*North-South Oriented Lot, 40'x80'*



# Bullhead City, Arizona 2007 – Water Harvesting Diagram

*North-South Oriented Lot, 40'x80'*



# Bullhead City, Arizona 2007 – House Elevations

*North-South Oriented Lot, 40'x80'*



**Bullhead City, Arizona 2007**

*North-South Oriented Lot, 50'x100'*



# Bullhead City, Arizona 2007 – Expanding the Floor Plan



*North-South Oriented Lots*

Expanded plan

Added-

hallway

4<sup>th</sup> bedroom

2<sup>nd</sup> carport space

2<sup>nd</sup> storage space

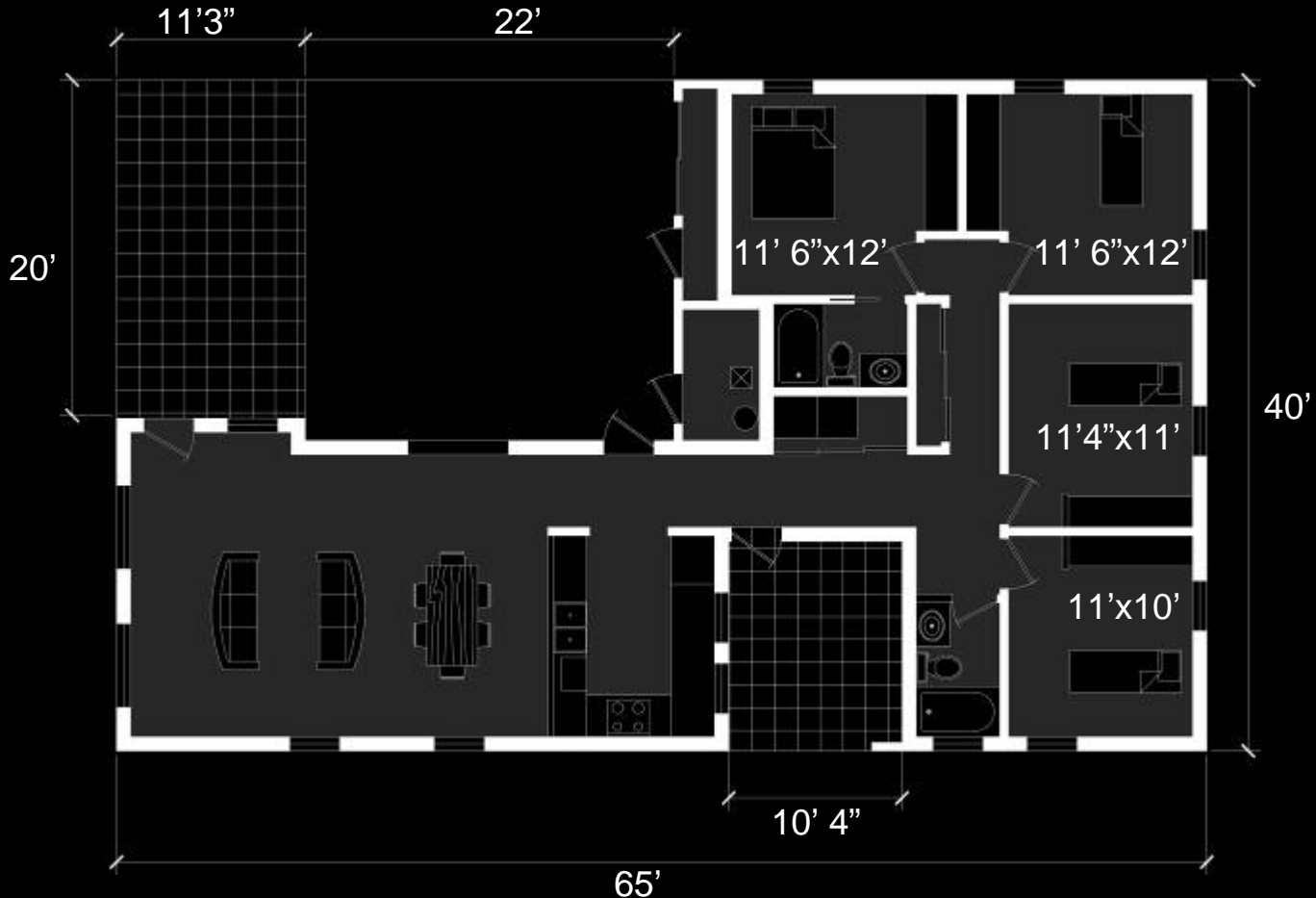
Reconfigured the master bedroom, 3<sup>rd</sup> bedroom, bathrooms and laundry



# Bullhead City, Arizona 2007 – House Floor Plan



*North-South Oriented Lot, 50'x100'*



1495 sqft

4 bedrooms

2 bathrooms

2nd storage room

2 car carport spaces

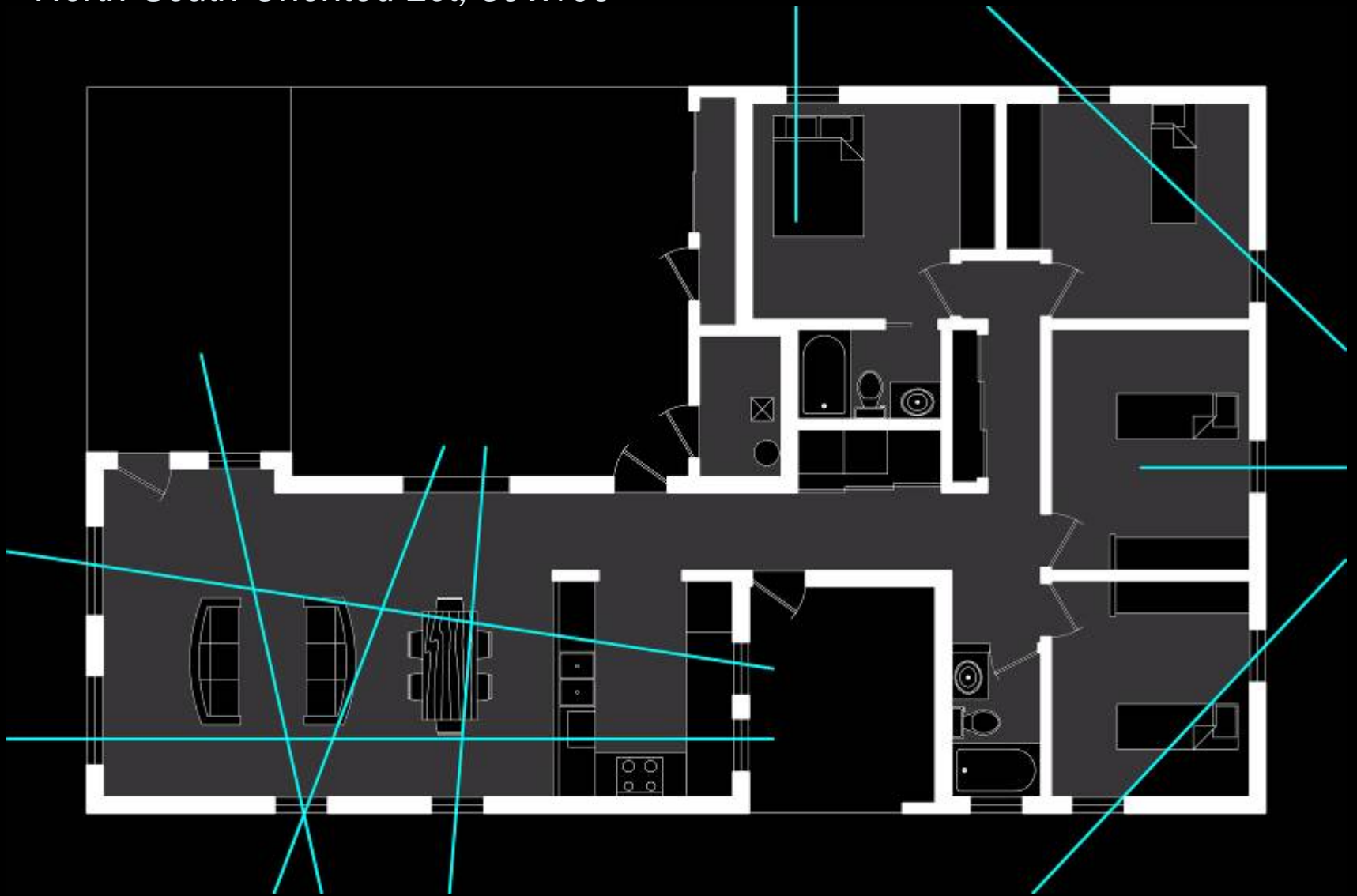
Kitchen pass through

Courtyard

# Bullhead City, Arizona 2007 – Natural Ventilation Diagram



*North-South Oriented Lot, 50'x100'*

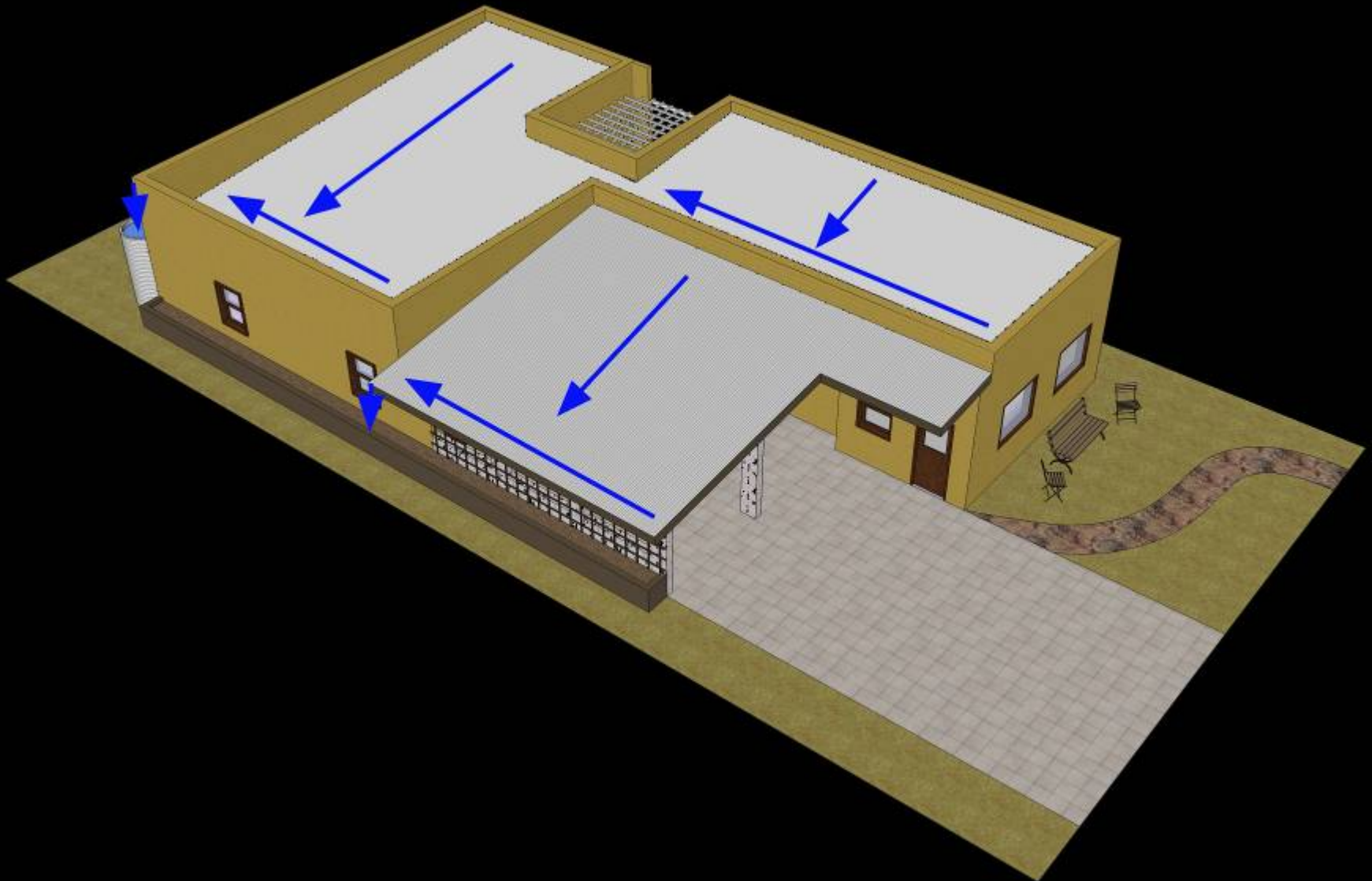


**Bullhead City, Arizona 2007 – Passive Solar Heating Diagram**  
*North-South Oriented Lot, 50'x100'*



# Bullhead City, Arizona 2007 – Water Harvesting Diagram

*North-South Oriented Lot, 50'x100'*



# Bullhead City, Arizona 2007 – House Elevations

*North-South Oriented Lot, 50'x100'*

