

Payson Habitat for Humanity



Longhorn Site
Multi-Family Housing Plan

Presented by:



**The Drachman Institute in partnership with
The Arizona Department of Housing**



Payson Habitat for Humanity – Longhorn Housing Plan

LEGEND

FOR RECORDS MAP NO. 680 & DKT. 646, PG. 713
IN CONNECTION WITH THIS SURVEY & PREVIOUS SURVEY
BY PIPE MONUMENT W/ BRASS TAG #16319,
AS NOTED
W/ BRASS TAG L.S. #24516

TOPOGRAPHIC SURVEY

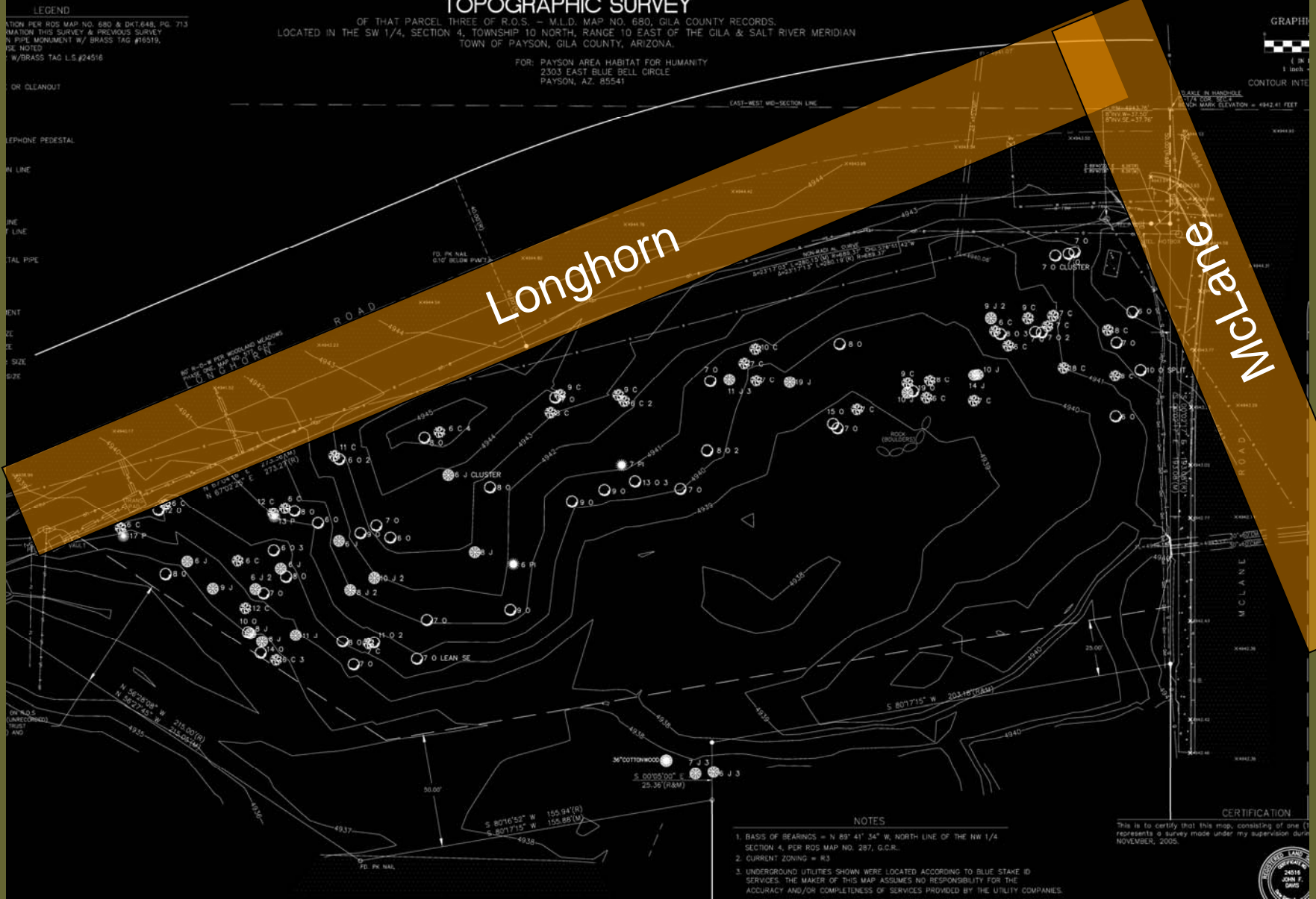
OF THAT PARCEL THREE OF R.O.S. - M.L.D. MAP NO. 680, GILA COUNTY RECORDS,
LOCATED IN THE SW 1/4, SECTION 4, TOWNSHIP 10 NORTH, RANGE 10 EAST OF THE GILA & SALT RIVER MERIDIAN
TOWN OF PAYSON, GILA COUNTY, ARIZONA.

FOR: PAYSON AREA HABITAT FOR HUMANITY
2303 EAST BLUE BELL CIRCLE
PAYSON, AZ. 85541

GRAPHIC



CONTOUR INTERVAL



Longhorn

McClane

NOTES

1. BASIS OF BEARINGS = N 89° 41' 34" W, NORTH LINE OF THE NW 1/4 SECTION 4, PER RODS MAP NO. 287, G.C.R.
2. CURRENT ZONING = R3
3. UNDERGROUND UTILITIES SHOWN WERE LOCATED ACCORDING TO BLUE STAKE ID SERVICES. THE MAKER OF THIS MAP ASSUMES NO RESPONSIBILITY FOR THE ACCURACY AND/OR COMPLETENESS OF SERVICES PROVIDED BY THE UTILITY COMPANIES.

CERTIFICATION

This is to certify that this map, consisting of one (1) sheet, represents a survey made under my supervision during the month of NOVEMBER, 2005.



Payson Habitat for Humanity – Longhorn Housing Plan

TOPOGRAPHIC SURVEY

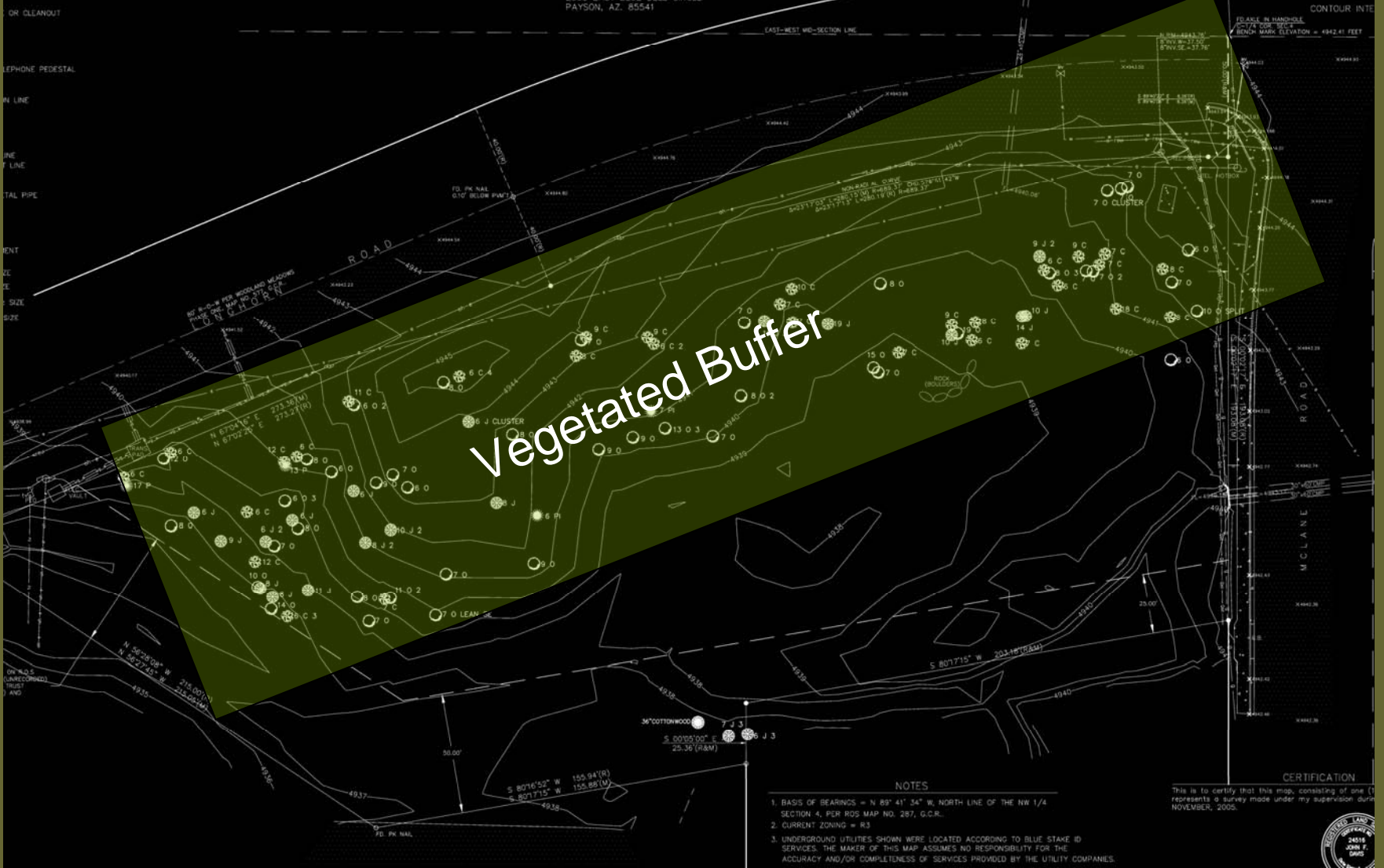
OF THAT PARCEL THREE OF R.O.S. - M.L.D. MAP NO. 680, GILA COUNTY RECORDS,
 LOCATED IN THE SW 1/4, SECTION 4, TOWNSHIP 10 NORTH, RANGE 10 EAST OF THE GILA & SALT RIVER MERIDIAN
 TOWN OF PAYSON, GILA COUNTY, ARIZONA.

FOR: PAYSON AREA HABITAT FOR HUMANITY
 2303 EAST BLUE BELL CIRCLE
 PAYSON, AZ. 85541

GRAPHIC



LEGEND
 INFORMATION PER RODS MAP NO. 680 & DKT.648, PG. 713
 INFORMATION THIS SURVEY & PREVIOUS SURVEY
 N. PIPE MONUMENT W/ BRASS TAG #16319,
 BE NOTED
 W/BRASS TAG L.S.#24516



Vegetated Buffer

NOTES

1. BASIS OF BEARINGS = N 89° 41' 34" W, NORTH LINE OF THE NW 1/4 SECTION 4, PER RODS MAP NO. 287, G.C.R.
2. CURRENT ZONING = R3
3. UNDERGROUND UTILITIES SHOWN WERE LOCATED ACCORDING TO BLUE STAKE ID SERVICES. THE MAKER OF THIS MAP ASSUMES NO RESPONSIBILITY FOR THE ACCURACY AND/OR COMPLETENESS OF SERVICES PROVIDED BY THE UTILITY COMPANIES.

CERTIFICATION

This is to certify that this map, consisting of one (1) sheet, represents a survey made under my supervision during NOVEMBER, 2005.

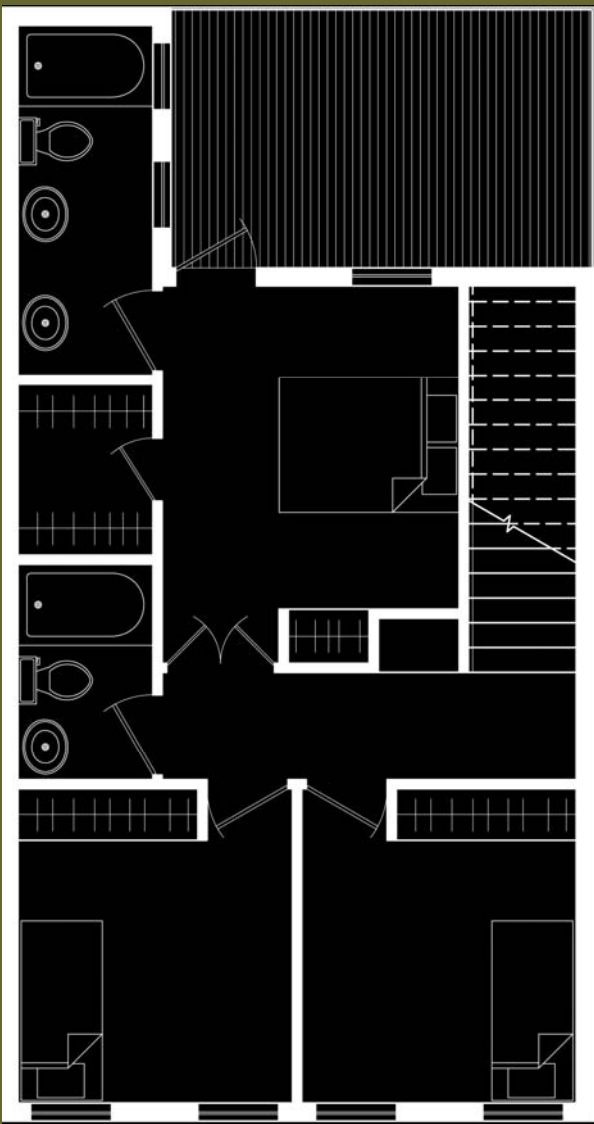


Payson Habitat for Humanity – Longhorn Housing Plan

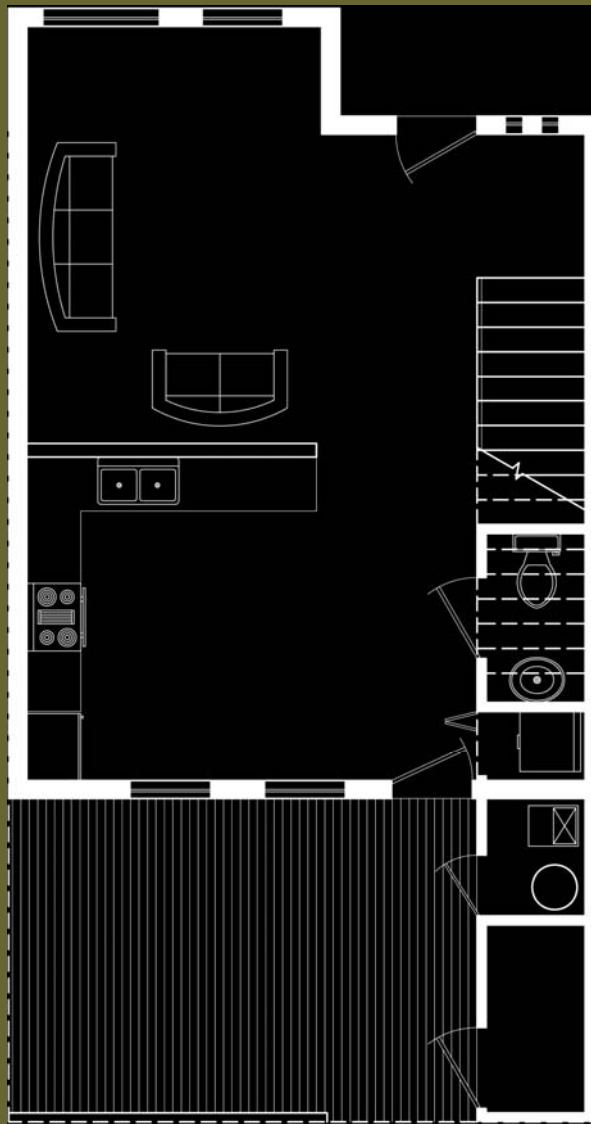
14 3-bedroom units @1200 sq.ft.
including circulation and storage



Payson Habitat for Humanity – Longhorn Housing Plan



First Floor Plan



Second Floor Plan

Payson Habitat for Humanity – Longhorn Housing Plan



Payson Habitat for Humanity – Longhorn Housing Plan



Payson Habitat for Humanity – Longhorn Housing Plan



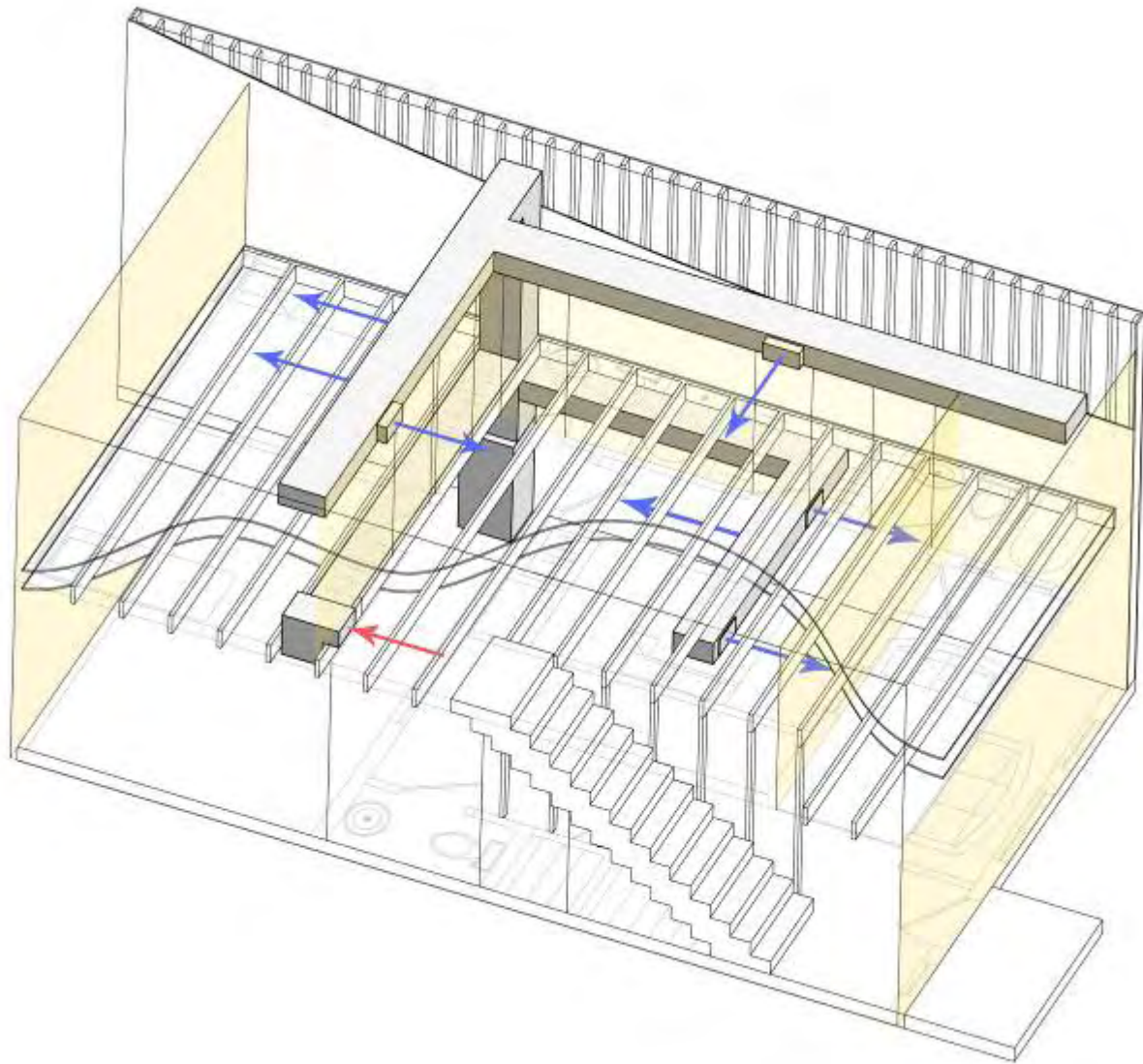
Payson Habitat for Humanity – Longhorn Housing Plan



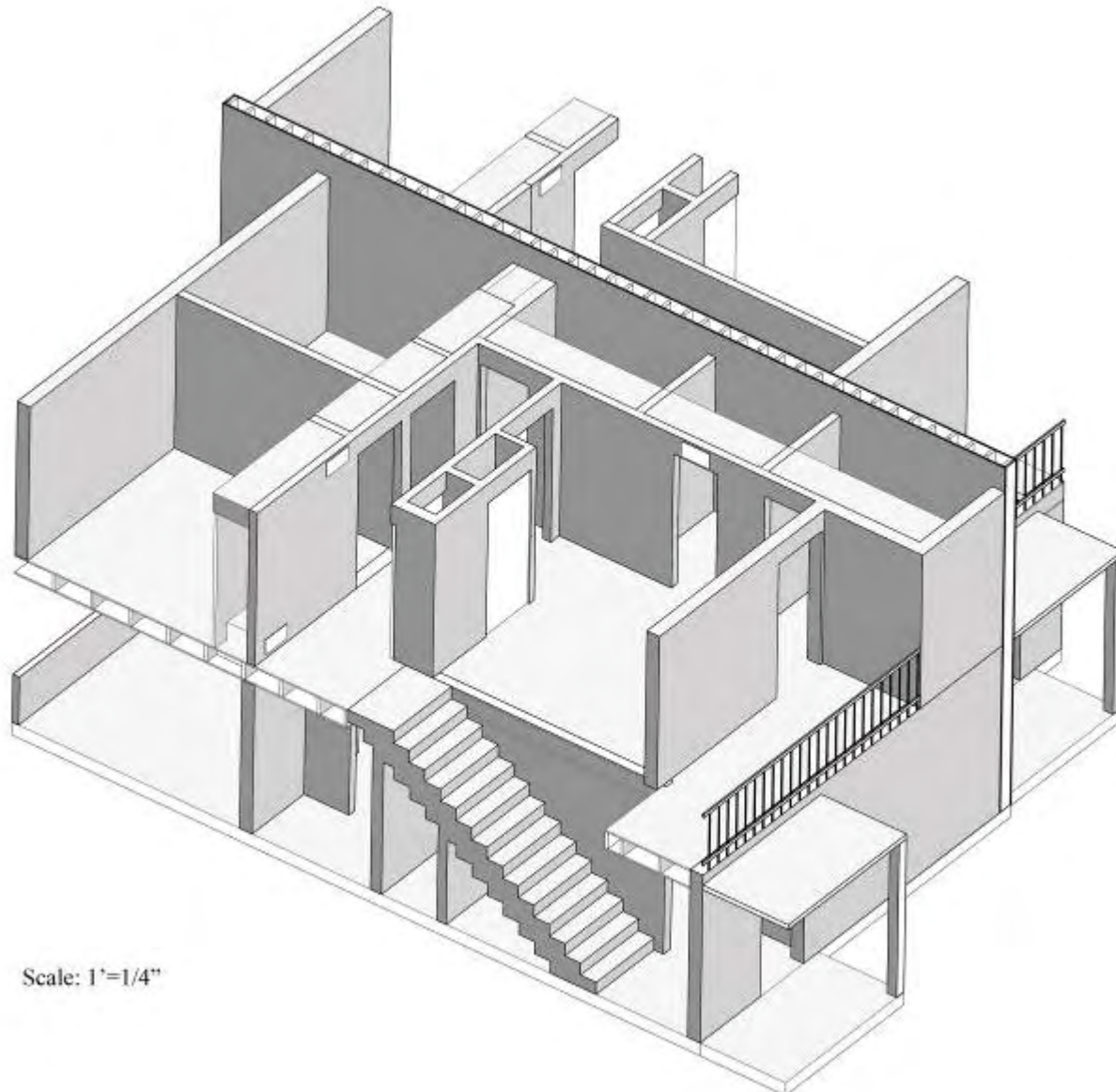
Payson Habitat for Humanity – Longhorn Housing Plan



Payson Habitat for Humanity – Longhorn Housing Plan

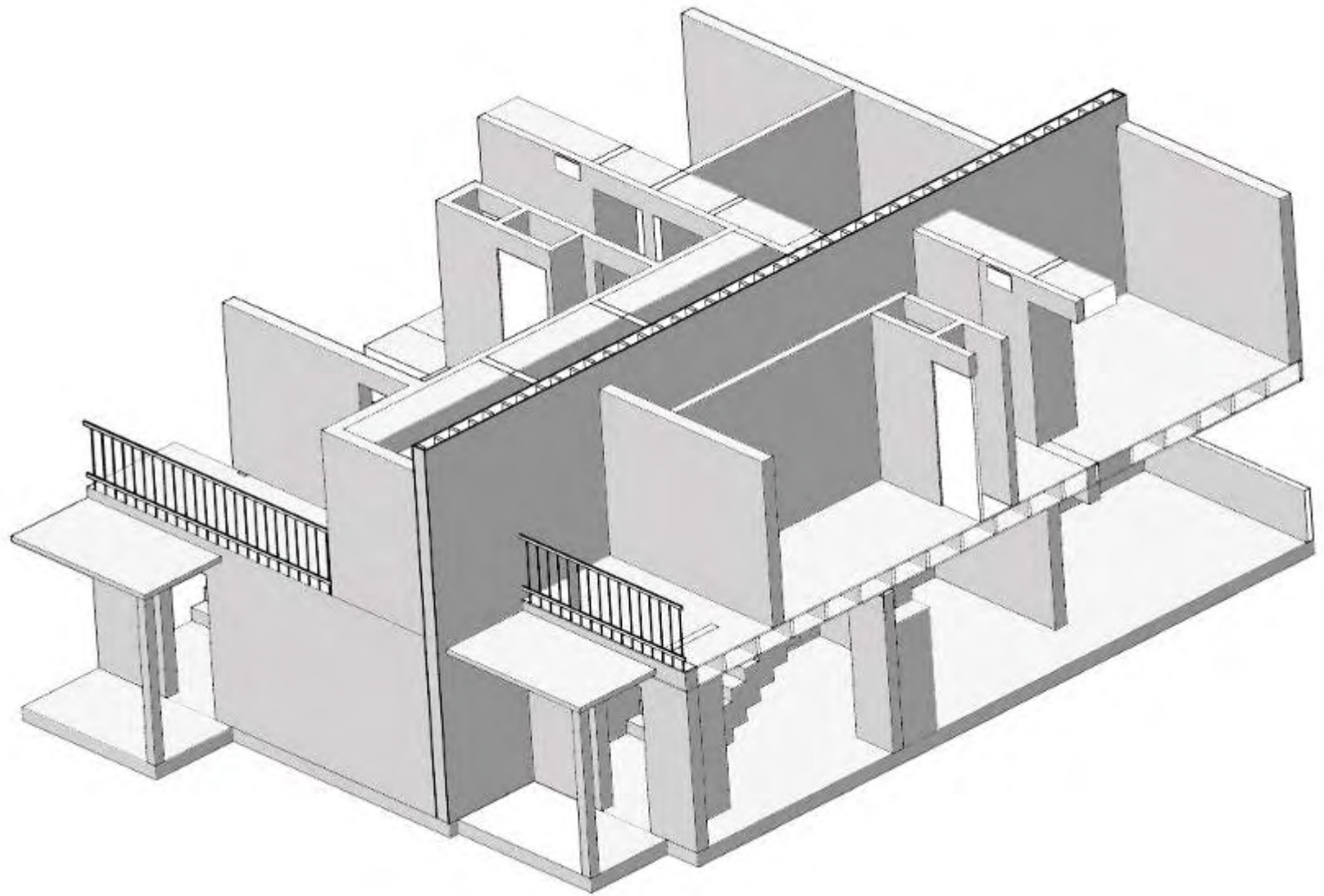


Payson Habitat for Humanity – Longhorn Housing Plan



Scale: 1"=1/4"

Payson Habitat for Humanity – Longhorn Housing Plan



Payson Habitat for Humanity – Longhorn Housing Plan