

# 1

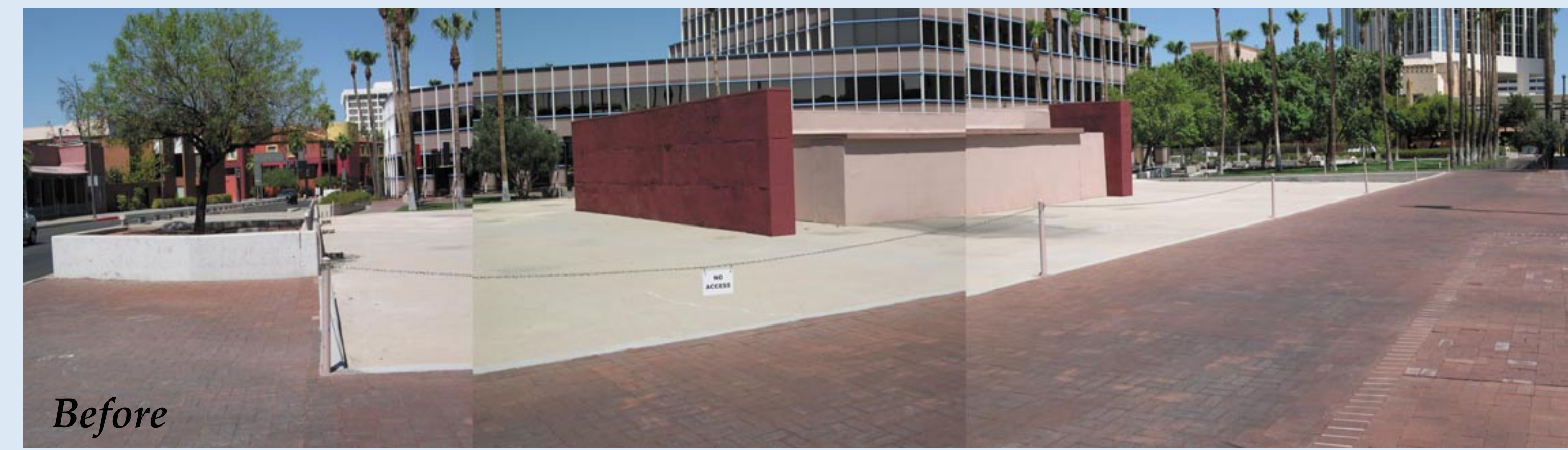
## South Church

High Rise Building Pad Project



Contextual Location Map

1 S. Church currently presents an opportunity to activate a 100% downtown corner. Recommended additions to the existing infrastructure can align this under utilized site with the Rio Nuevo development plan for the area.



View into Site from Southeast Corner (at Stone Ave. and Broadway Blvd.)

Clear visibility into the site makes this a high profile node within the downtown core. The potential for aesthetic, functional and environmental improvements is apparent, in addition to social and economic incentives.

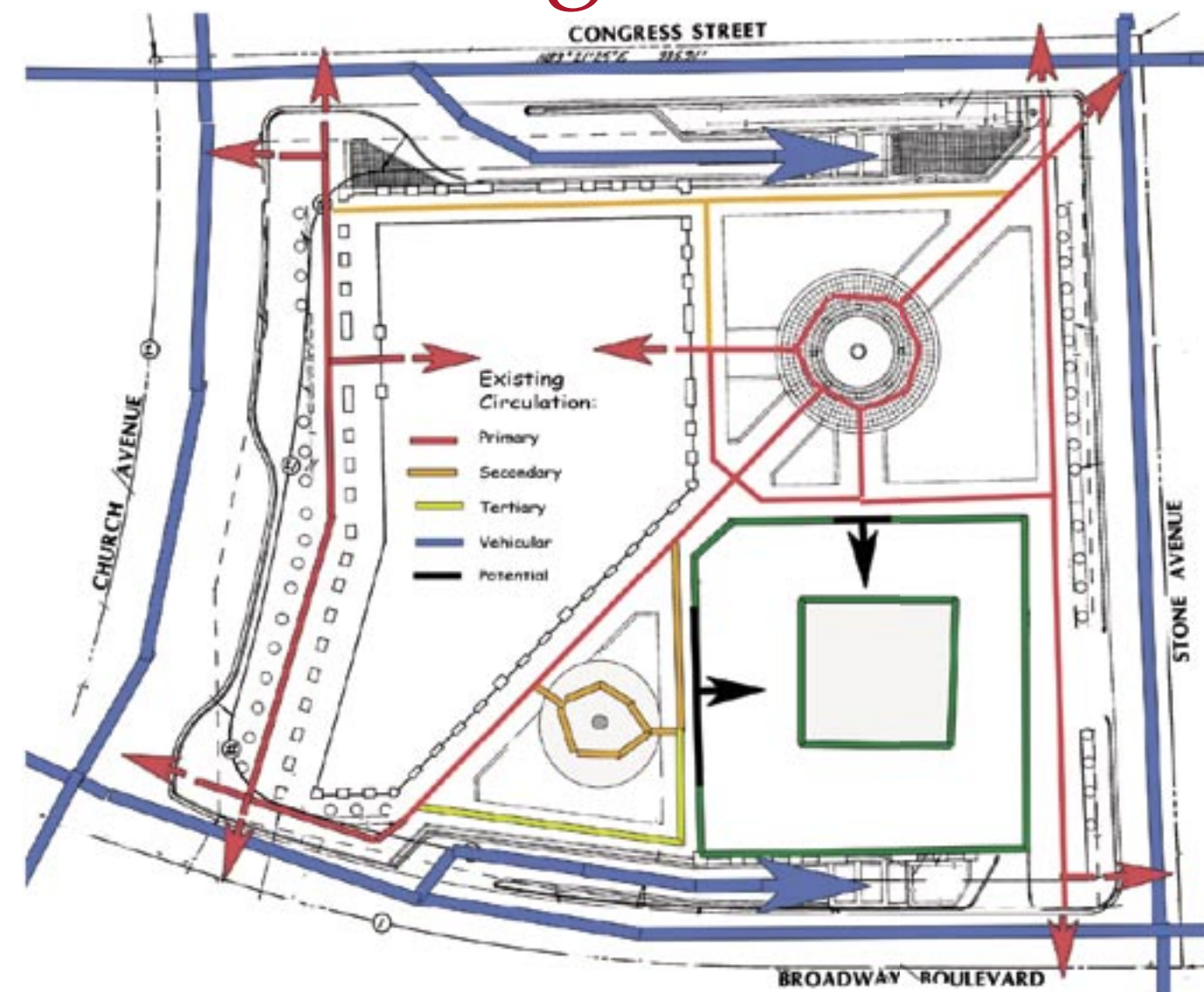


View into Site from Northeast Corner



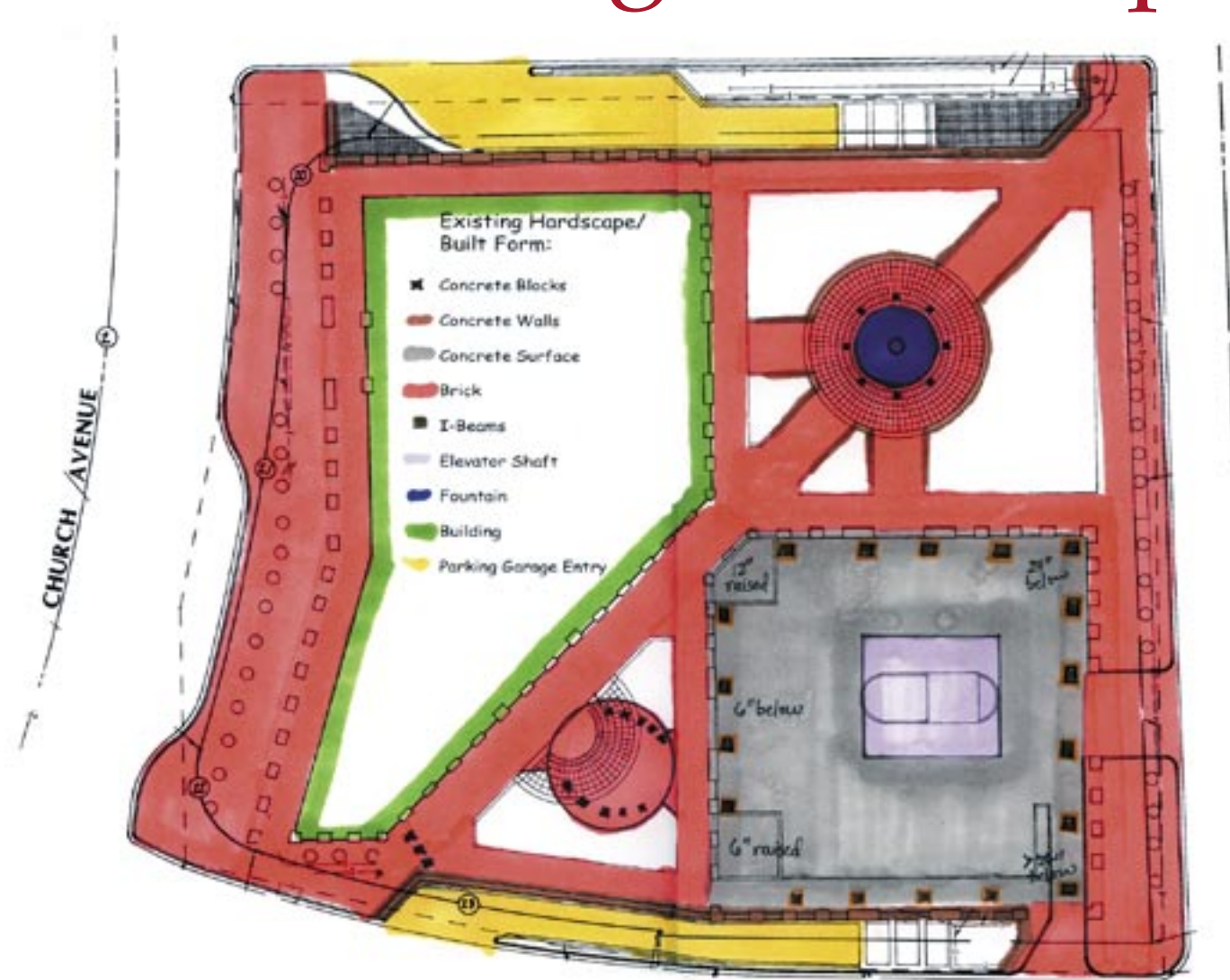
View into Site from Northwest Corner

### Existing Circulation



The northwest corner of Stone Ave. and Broadway Blvd. attracts a high volume of pedestrian and vehicular traffic. Accessibility into the site is restricted by elevation changes around the perimeter, safety issues regarding this must be addressed. There is potential to increase connectivity to adjacent plazas and the sidewalk along Stone Ave.

### Existing Hardscape

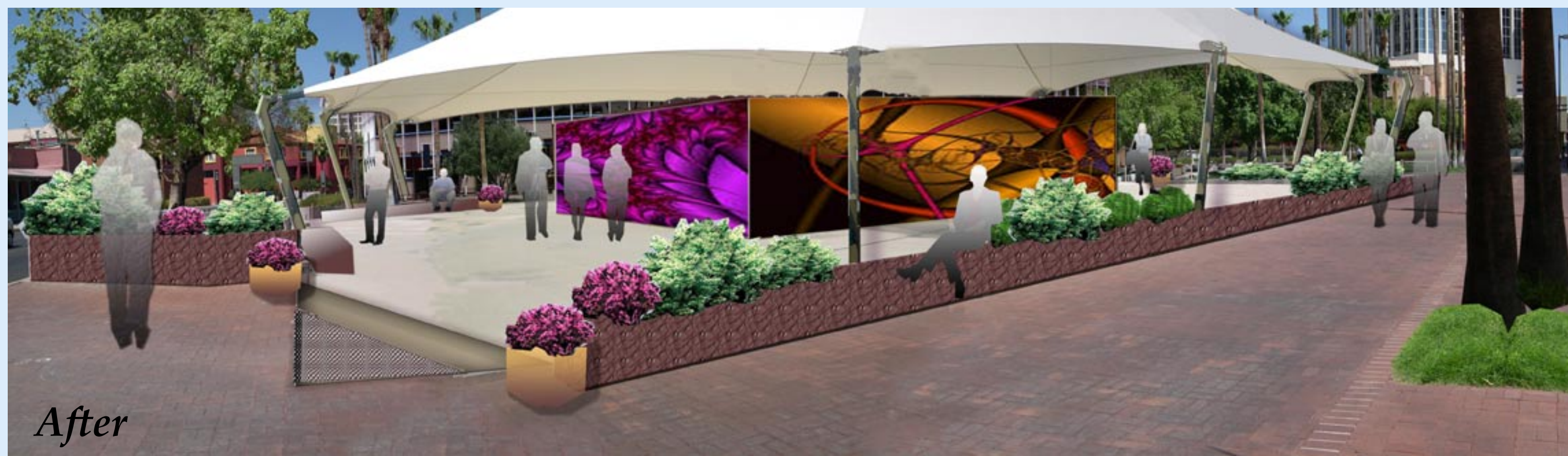


The site consists of a impermeable concrete slab perforated by 6" raised I-beams around the perimeter. A 12'x48" plywood covered elevator shaft is centrally located on the slab. Brick pavers concrete planter beds and seating are located within the adjacent plazas.

### Existing Vegetation



No vegetation exists on site due to concrete surface. Adjacent plazas and the ROW along Stone Ave. contain mature vegetation. Utilizing the existing plant palette from the surrounding context will create a unifying effect throughout the site. Raised planter beds and container plants are potential solutions for the lack of planting area.



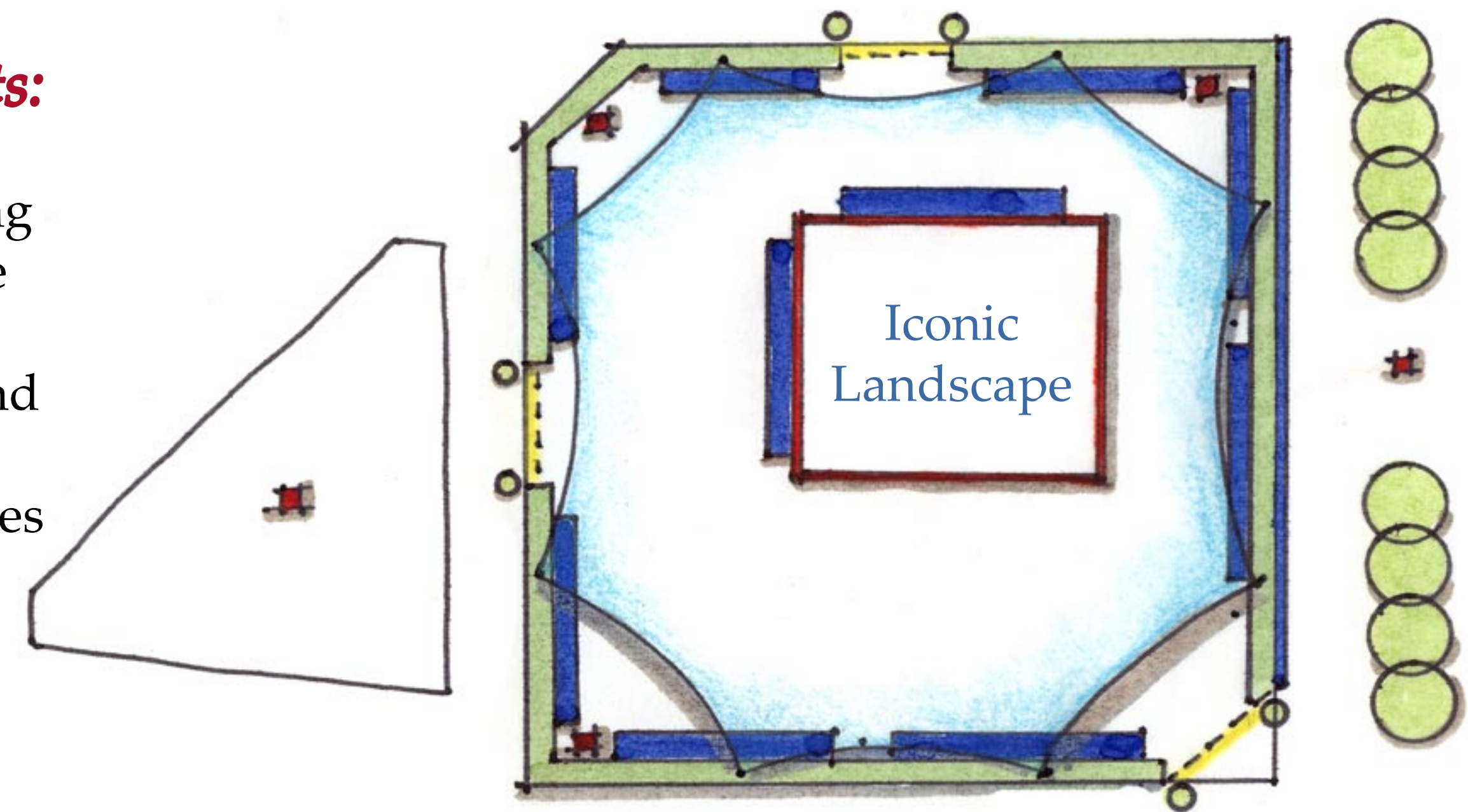
After

### The Iconic Landscape *A bold expression focused on the arts.*

This artistic venue is designed for viewing community art and sculpture in a weather protective setting. Low laying vegetation and an open central ring allow for clear views into and from the site. Planter beds and seat walls surround the perimeter of this outdoor gallery.

#### Highlights:

- \* Art and sculpture on a rotating schedule, reinventing the space continually
- \* Corner entry off Broadway and Stone invites visibility
- \* Large tensile structure becomes an icon in the downtown landscape
- \* Night lighting options within the tensile structure



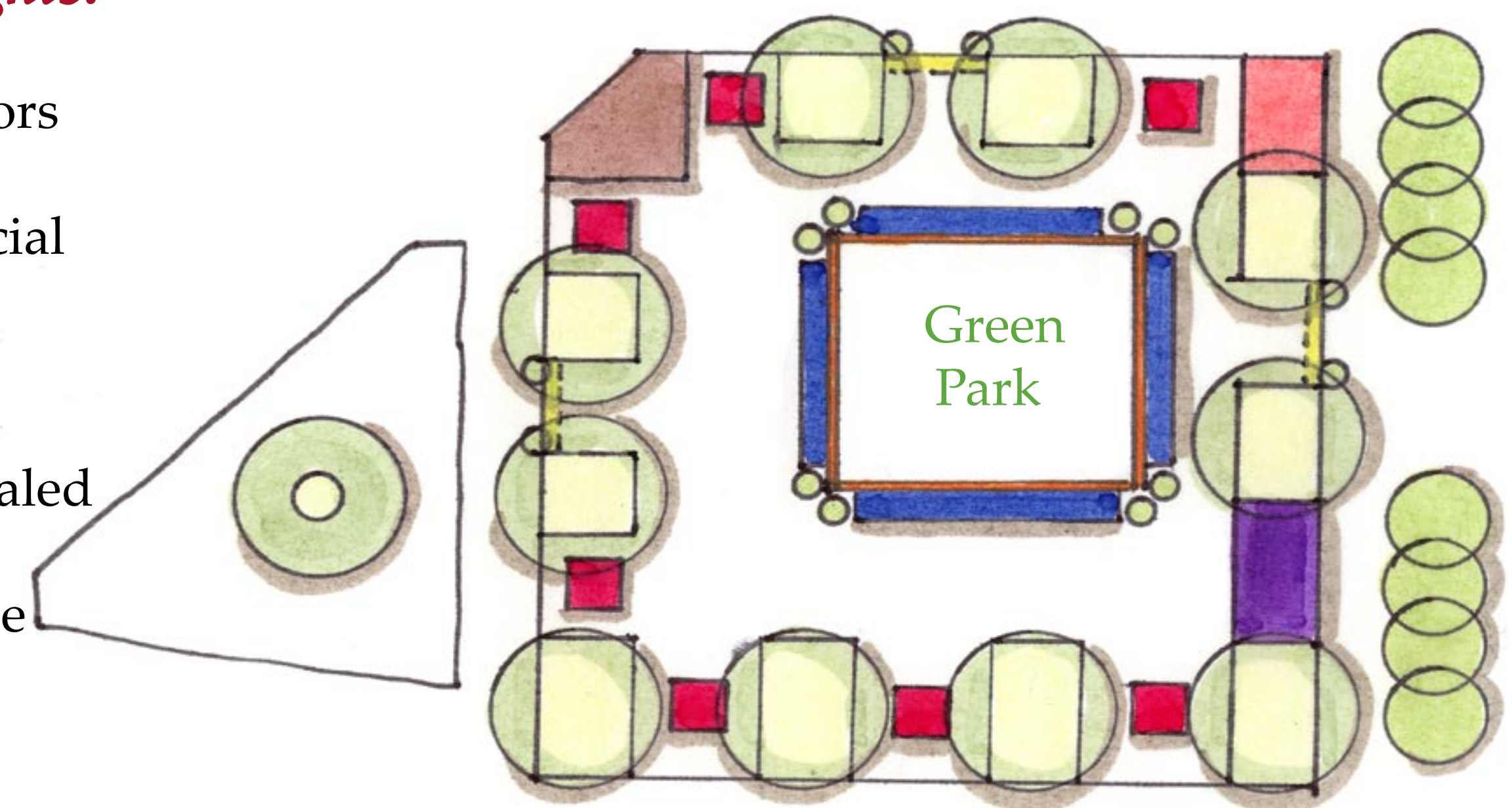
After

### The Green Park *Bringing the downtown community together.*

A plaza designed to promote social interaction and stimulation in a park like setting. Raised planter beds enliven the space with foliage and color. Social amenities such as a coffee and newspaper stand are enhanced by the variety of seating options. The intimate scale created within the plaza is a respite from the urban matrix.

#### Highlights:

- \* Game tables welcome visitors with entertainment options
- \* A small stage allows for social events and group gatherings
- \* Entry along Stone Ave. increases accessibility
- \* Plywood structure is concealed by vegetation
- \* Brick surface unites all three plazas



After

### The Monument *Reflection on the value of commerce.*

A tribute to the business community, this plaza tells the story of the people and companies that make up Tower 1. Stepped terraces and a reflective surface replicate Tower 1, while a series of tensile structures echo the pyramid top. The perimeter is opened along the length with broad steps that invite circulation throughout.

#### Highlights:

- \* Information panels serve as marketing tools for businesses within the tower
- \* Plywood structure becomes central sculptural element
- \* Safety and security maintained through clear views and accessibility
- \* Stained concrete surface warms appearance of plaza

