

Rincon Heights Neighborhood



Purpose of Meeting

Rincon Heights Neighborhood Improvement Plan

Background

Update

Project Review

Discussion

Next Steps



Introductions

Neighbors

PIT Crew

Guests



Background - genesis of Plan

Initial Plan - 1997

Identifying priorities

8th Street beautification

Commitments to develop plan - PIT Crew

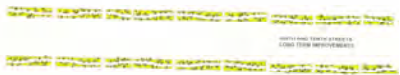
Plan development



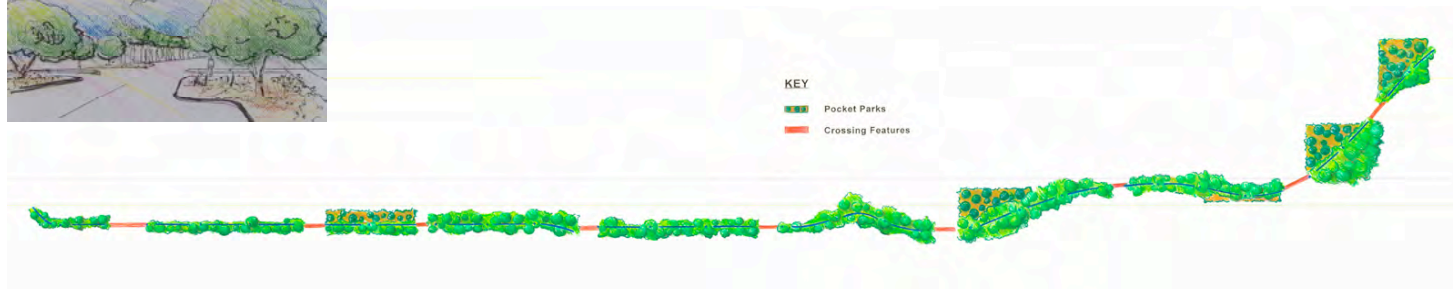
MEMORANDUM OF
UNDERSTANDING
PROPOSED
UNIVERSITY (TUSD)
EXPANSION

Background -

Initial Plan 1997



- Neighborhood landscape improvements
- Contiguous sidewalk network
- 8th Street traffic circles
- 9th/10th Street chicanes or choke-downs
- Pocket parks
- Art Enhancements at wash crossings

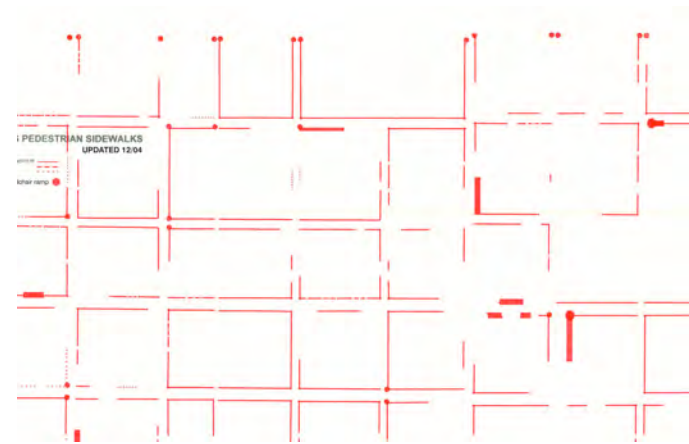


Status -

Plan development by PIT Crew

- Update the plan
- Develop a strategy
- Meet with City/County
- Develop neighborhood goals

- Vibrant Community
- Strong sense of place
- Environmental awareness
- Safety and comfort
- Beauty, Diversity
- Social connections



Status -

PIT Crew accomplishments

New on-line Forum <http://forum.rinconheights.org>

Neighborhood Web Site www.rinconheights.org

Partnership opportunities

Job Corps

Primavera Builders

Trees for Tucson

Project evaluation/selection



Project Review -

Evaluation Criteria: Neighborhood goals
Cost of project
Time to implement
People positively affected
People negatively affected
Visual significance

Project Review -

Creating identity and building community

Landscaping throughout neighborhood

9th or 10th Street roadway & streetscape

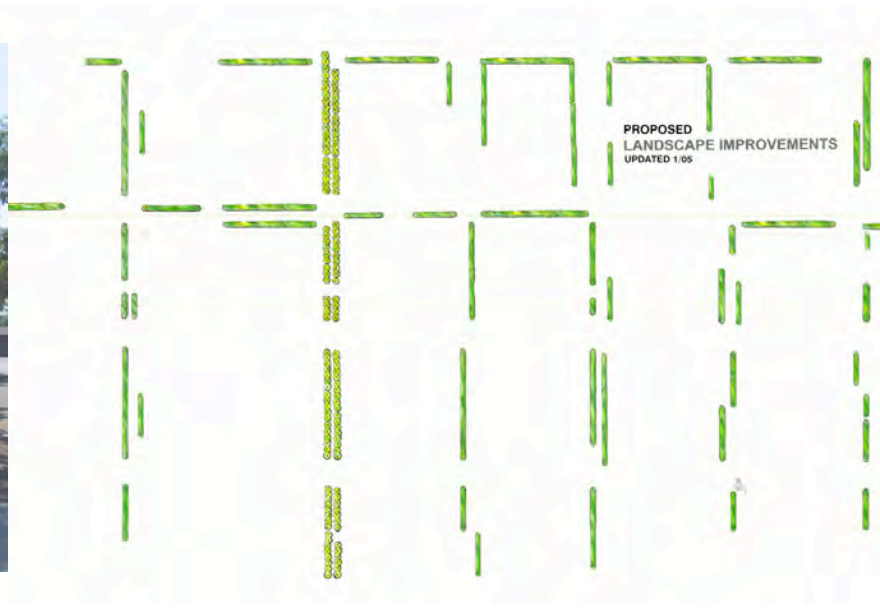
Sculpture park

Wash crossings

Future projects: lighting/sidewalks

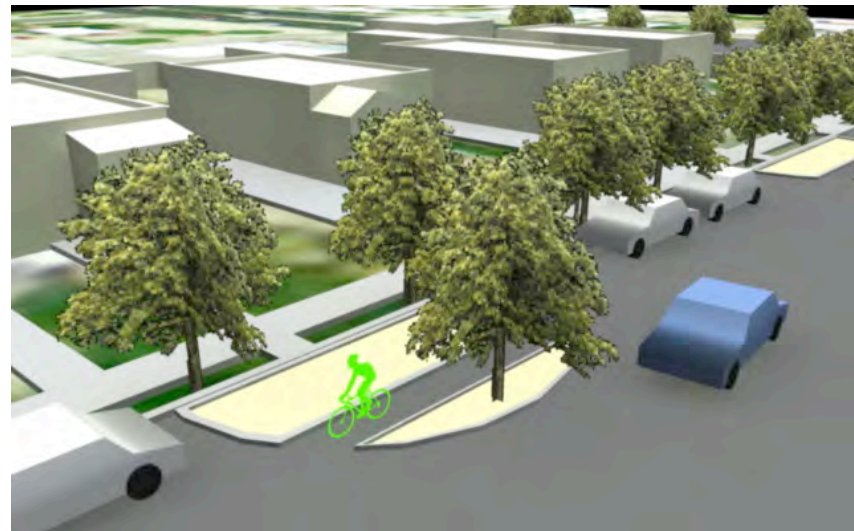
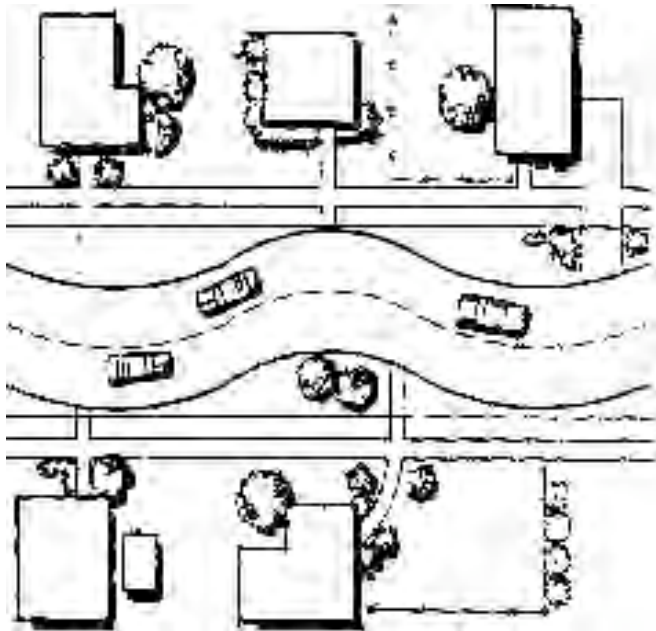
Landscaping throughout neighborhood

Neighborhood-wide planting of trees and shrubs in the back-of-curb right-of-way areas, as visually needed, to define walkways, provide visual appeal, provide pedestrian comfort through shade and reduction in ambient temperature and occasionally shade parking on-street parking.



9th or 10th Street Chicane System

Along the entire length of the east-west street, install 30-40' long planting chicanes that extend out from the existing curb 10-12' into the roadway, in an alternating pattern on one side of the street and then on the other.



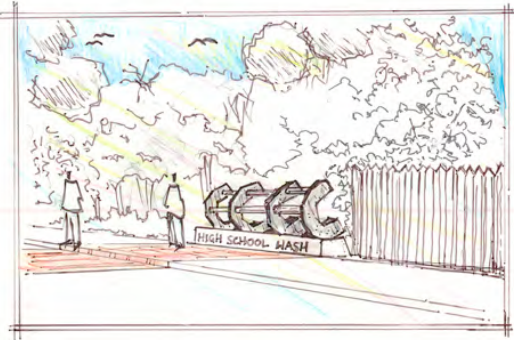
Sculpture park

Establish a small neighborhood park on a vacant lot owned by the City. This sustainable park would be planted with native, low-maintenance vegetation and would contain one or more sculpture installations in partnership with the U of A School of Art graduate program in Sculpture.



Wash crossings

On north-south streets where High School Wash crosses under the street, install a textured and colored and visually attractive surface onto roadway.



Discussion

Landscaping throughout neighborhood

9th (or 10th) Street

Sculpture Park

Enhancements at wash crossings

Future projects -

Lighting

Sidewalks

Next Steps

Neighborhood input/support - this Meeting

Submission of preliminary proposal

Grant development

Project implementation

Conclusion

Summary of grant proposal

Stay involved: <http://forum.rinconheights.org>
www.rinconheights.org

Help out - next PIT meeting is